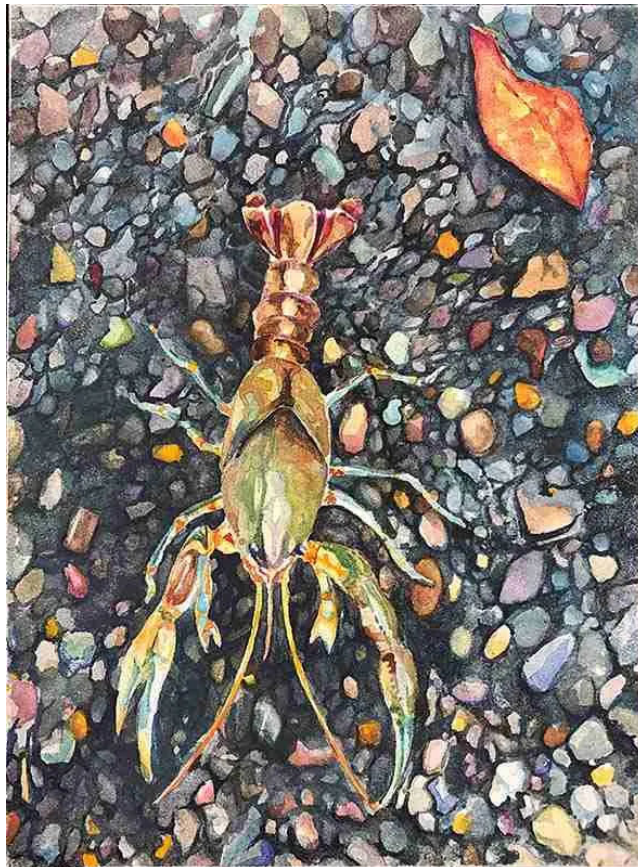


Home > Local News > Community > Lowther, Zusman explore everyday scenes with fresh eyes in exhibition opening March...

Lowther, Zusman explore everyday scenes with fresh eyes in exhibition opening March 22

March 5, 2024



"Crawfish" (watercolor on aquaboard, 7 inches by 5 inches) by Rhaelene Lowther is one of the artworks featured in her exhibition with Anna Zusman on the ARTx3 Campus. "Quotidian Moments: Different Lenses" opens Friday, March 22, 2024, in the Ben J. Altheimer Gallery at the Arts & Science Center for Southeast Arkansas, 701 S. Main St. in Pine Bluff.

PINE BLUFF, Ark. — Artists and educators Rhaelene Lowther and Anna Zusman present artwork inspired by the scenic walks they took together during the pandemic, opening soon on the [ARTx3 Campus](#).

"Quotidian Moments: Different Lenses" opens Friday, March 22, 2024, with a free public reception from 5-7 p.m. The

We use cookies to ensure that we give you the best experience on our website. If you continue to use this site we will assume that you are happy with it.

OK

The exhibition is sponsored by Relyance Bank, and the reception is sponsored by MK Distributors.

“‘Quotidian Moments’ is the collaborative efforts of artists Rhaelene Lowther and Anna Zusman that presents to the viewer a pair of unique artistic styles, interpretations, and methods alongside a singular source of inspiration taken from common observations within their surroundings,” Kevin Haynie, curator of collections and exhibitions, said. “Where one artist explored the colors, or patterns of an artifact, the other would interpret more abstract notes. The collection of drawings, paintings, prints, and source photographs, gives the viewer some insight into both artists’ unique ways in which they process the world around them while hoping to inspire others to take time to observe the world around them while leaning into their own individuality along the way.”

The artwork in “Quotidian Moments” is inspired by discussions that Lowther and Zusman had about their observations while walking, drawing on their knowledge of art history and personal experiences to expand on ideas. They especially use transformations such as seasons, lighting, weather and life cycles as a springboard for this series of paintings and prints that explore those concepts further. They reference artists as different as comic artist Bernie Wrightson, Hudson River School painter Thomas Moran, surrealist painters like Rene Magritte and Lenore Carrington, and American painter and quiltmaker Faith Ringgold.

Lowther and Zusman are associate professors of art at Southern Arkansas University in Magnolia. Lowther received her Master of Fine Arts degree in digital art from Utah State University in 2013, and Zusman received her Master of Fine Arts degree in painting from the San Francisco Art Institute in 2009. For more information about Lowther and Zusman and to view more of their work, visit their websites <https://rhaelene.wixsite.com/rrlowther/portfolio> and annazusman.com/.

For more information about current and upcoming exhibitions on the ARTx3 Campus, visit artx3.org.